

THE HARBOUR VIEW PLACE

at the ICC megalopolis



ICC Megalopolis

Monthly Rate & Suite Size

Room Type	Size (Gross Floor Area)	Monthly Rate
Studio / Studio Deluxe	464 sf – 674 sf	HK\$39,500 – HK\$62,500
1-Bedroom Suites / 1-Bedroom Deluxe	802 sf – 1,138 sf	HK\$65,000 – HK\$109,100
2-Bedroom Suites	1,153 sf – 1,263 sf	HK\$112,000 – HK\$115,000
3-Bedroom Suites	1,420 sf – 1,623 sf	HK\$126,000 – HK\$154,100

Room rate is inclusive of management fee, government rates, electricity, water supply, air-conditioning, local calls, fax line, kitchenette, cutlery, housekeeping and linen and will be calculated according to the actual number of calendar day in the relevant month included in the period of stay

Attentive Services

- Housekeeping service 2 times per week & Bed linen changed 1 time per week (Housekeeping service schedule is subject to hotel prearrangement)
- 24-hour Concierge

In-room Provisions

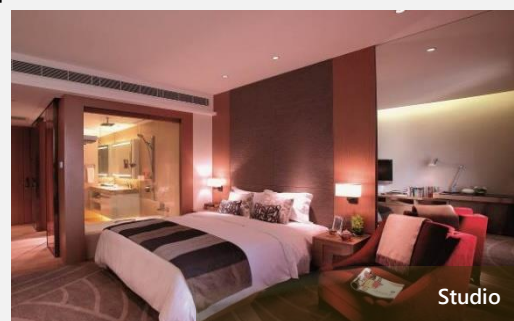
- Wide Screen LED HDTV
- Blu-ray player
- KEF home theatre system with Bluetooth adaptor*
- Pillow top Sealy mattress with choice of pillows
- Welcome package upon arrival
- In-Room security safe
- LED HDTV in bathroom #
- Stereo speaker in bathroom

Fully Equipped Kitchenette

- Nespresso coffee maker
 - Electric Kettle & Toaster
 - Induction hob
 - Microwave (Oven for One-Bedroom Deluxe and above)
 - Range of crockery, glassware, tableware and utensils
 - Washing and Drying Unit
 - Refrigerator
 - Dishwasher*
- * Except Studio / Studio Deluxe # 2-Bedroom Suite or above*

Dedicated Facilities

- Rooftop heated pool & Jacuzzi on 76/F
- Health club & Lounge
- Reading area with internet access
- Self-service Laundromat (Subject to charge)
- eNewspapers and magazines



Studio



1-Bedroom Suite

PLEASE CONTACT US FOR PRIVATE VIEWING TOUR



Sun Hung Kai Properties

Marketing Office, L/F, The HarbourView Place
1 Austin Road West, Kowloon, Hong Kong



SIGNATURE HOMES

THE HARBOUR VIEW PLACE

at the ICC megalopolis

Contract Term	1 to 12 months
Deposit	<u>Company Contract (HK Registered Company Only)</u> Below 7 months : 1 month's room rate From 7 to 12 months : 2 months' room rate <u>Personal Contract</u> 2 months or below : 1 month's room rate Above 2 months to 12 months : 2 months' room rate
Payment Method	Bank Transfer / Cheque / e-Cheque / Cashier Order / Direct Debit
Additional Services	<ul style="list-style-type: none"> • Wireless Broadband Service at HK\$500 per month • Personal Storage Space at HK\$1,000 per month (1m (H) x 0.8m (W) x 0.8m (D)) • Car Parking Space at HK\$5,500 per month • Premium Housekeeping Service Package: Daily service (except Sundays & Public Holidays) & Bed linen changed 3 times a week (subject to charge)



1-Bedroom Deluxe



2-Bedroom Suite



Gymnasium



Rooftop Heated Swimming Pool





Lounge

Transport Convergence

Atop Kowloon Airport Express / MTR station
 Adjoining the Express Rail Link at West Kowloon Station
 Covered walkway to MTR Austin station
 Public bus and minibus terminus
 Part of the integral development in the ICC megalopolis
 Walkable distance to West Kowloon Cultural District

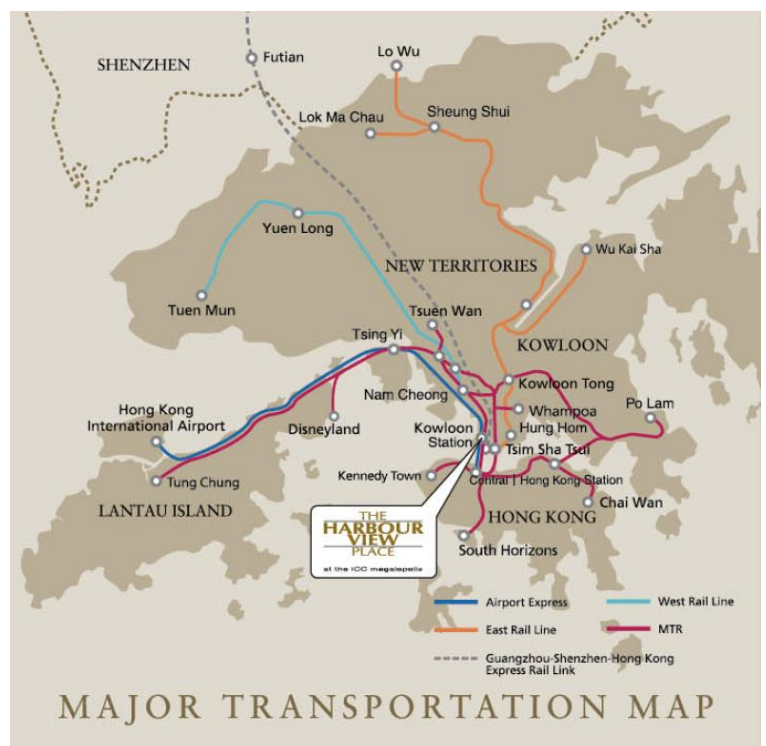
Enquiry

(852) 3718 8000

(852) 9661 7100  

enquiries@harbourviewplace.com

www.harbourviewplace.com



The information contained herein is for reference only. Some of the photos may have been enhanced by computer graphics and may not be taken from the development. It is subject to change without prior notice and does not form part of any offer or contract.

Updated in Mar 2024